



**Can you name these ploughmen? Photo taken over 40 years ago.  
Clue, it was taken at a Rakaia Ploughing match.**



Answer bottom of Page 2

If it is ploughing news, the editor would like to hear about it.  
Photos and stories are appreciated.  
Editor:- [bruceandsandy@windowslive.com](mailto:bruceandsandy@windowslive.com)

Please remember the items in the newsletter are submitted by volunteers and to the best of the editors knowledge, the information is correct at the time of printing.

**NZPA Major Sponsors:-**



**Quality Endurance Passion**

Sponsors of the "Gulf Oil Silver Plough" Championship



Sponsors of the "Farmlands Fuel Reversible Plough" Championships



Sponsors of the "New Holland Agriculture Vintage Plough" Championship



Sponsors of the "Rural News Horse Plough" Championship

**NZPA Associate Sponsors:-**



**Jordan Family**



**The Tractorman**



❖ The men are from left to right - Euan Duncan Rakaia, Jim Wylie Timaru, John Davison Rakaia, Bruce Redmond Methven and Bill Winter North Canterbury

## Obituaries:

Margaret Chittock, Thelma Eaton, Brenda Rutherford and Eleanor Ashton.

## INTERESTING HISTORY

*We think nothing these days of travelling long distances for a weekend of ploughing. I thought you might be interested in a letter written my great-grandfather about a trip he made in 1906 when he was 54. He had decided their farm at Rangiwahia (Manawatu) was too small to support his family. He had received information about a land ballot in the Waikato and this is part of the letter he sent to his family in England.*

### John Furniss- 3<sup>rd</sup> and final instalment of Alex Furniss's grandfather's journal 1907

In my return journey from Auckland first time I was passing through on train (Inglewood Station) I looked out and saw Mr Evans, I ran out to speak to him and he would not let me go further that day so I stayed with them from Saturday until Monday morning. Found them all well, I gave Mrs Evans a fright when she saw me in the house unexpectedly up went her hands as if she had seen a ghost for she had not seen me since she left England.

I came home on the Monday walking 20 miles from Ohineaiti Station after 4 in the afternoon, the railway journey being somewhere about 150 miles. Found all well in bed when I got home.

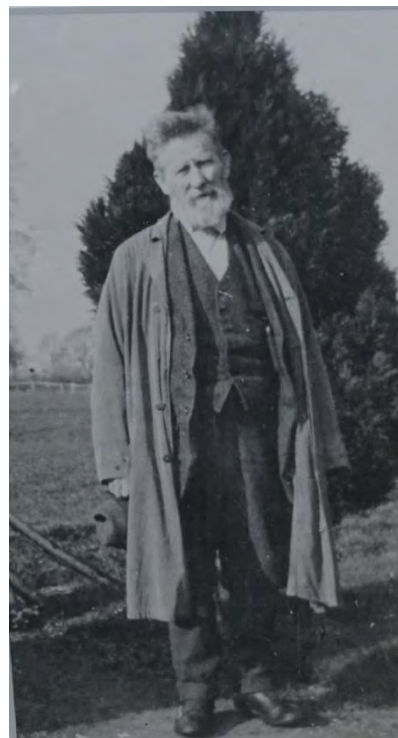
Since I returned we got a grant of money from the Government to metal a part of our road here and the engineer asked me if I could take the contract for the work and I agreed to do so at 3/9 per cubic yard of metal, I tried to get hire teams to do the carting but could not do so. The engineer said if I would buy some there would be plenty of work for them so I bought them on a 3 months bill and began the work and when we had done about 17 pounds worth of it the weather put a complete stop to it and we had not been able to get on with it since but we have had some other work for the teams such as carting firewood for the butter factory, and also for the people, also for a few other jobs.

We sent for David when we got the horses to drive them while we got the metal out, but when the job stopped David, Jack and Jim took a bush falling contract which they finished 3 weeks ago.

Meanwhile I was engaged with a neighbour completing the fence which divided our sections so the place is now fenced in. David has now make up his mind to go to the South Island, there is to be a Grand Exhibition in Christchurch this spring and summer and David wants to see it and when he has had a summer in the South Island he intends visiting the old country for a summer there but I think not to settle there. With love to you all (we are all well and hope you all are).

J. and M. Furniss and Family

(P. S. Potatoes are about 30 shillings per sack here but we have plenty for use and for seed).



### Facebook

The NZPA has their own Facebook page, check out the photos and comments:  
[www.facebook.com/NZPloughing](http://www.facebook.com/NZPloughing)

### Website

The NZPA has their own website page:-  
[www.nzplough.co.nz](http://www.nzplough.co.nz)

## NZPA Executive Meeting – January 2019

Judges - the executive felt it needed to be made known that if people wish to judge at NZ Ploughing Championships, then their names need to be put forward by an association at regional conferences/meetings.

YFC - Four contestants this year will be competing in the new Young Farmers class at the NZ Ploughing Championship.

Match dates – Marlborough's match is definitely Queens Birthday weekend and not October. East Otago is 3<sup>rd</sup> May take note please.

Ian Woolley was welcomed to the Executive replacing Alan Gifford, thank you to Alan for his time on the Executive.

Welcome to Ian McSporran who replaces Alex Furniss, thank you again Alex.

Regional colours- the Executive felt pride in your province was great, therefore if competitors wished to put some provincial branding on their tractor, horses, ploughs e.g. flags that would be allowed.

Judges briefing meeting - Bruce Redmond leads the meeting with assistance of Alan Wills at the Rakaia final.

Stewards are needed for the NZ Ploughing Championship at Rakaia, anyone interested please contact Willy Willets 021 924093

Minimum age for ploughing - if a competitor is under the minimum age they can apply for dispensation with parental consent. Enquires to the General Secretary.

### **Apple Shortcake** – Gladys Rowe, Manawatu

4ozs butter	1 large cup flour (may need more)
½ cup sugar	1 tsp baking powder
1 egg	cold stewed apple

Cream butter and sugar, add egg and mix well. Mix in flour and baking powder and knead a little. Roll half the mixture on bottom of ovenproof plate. Spread with stewed apple and put other half of mixture on top.

Cook 160° C for 20-25 mins.

Gladys doubles the recipe to feed hungry Ploughing folk at the Manawatu Match. It's very popular!



No day is so  
bad that it  
can't be fixed  
with a nap.

## Silver Plough 11<sup>th</sup> - 12<sup>th</sup> May 2019 Rakaia Judges Panels

### Conventional - Reversible

<u>Panel A</u>	<u>Panel B</u>	<u>Panel C</u>	<u>Panel D</u>
Bruce Redmond	Bruce Chittock	Alan Wallace	John Smith
Ian Woolley	Jimmy Stewart	David Paterson	Steven Watt
Ronald Sheat	Marty O'Reilly	Richard Dillon	Lynda Guy

### Vintage – Horse 2019

<u>Panel A</u>	<u>Panel B</u>	<u>Panel C</u>	<u>Panel D</u>
Peter Carter	Neil Gamble	Brian Kirk	Owen Horsnell
Bob Anderson	Colin McConachy	Allan Brown	Alistair Allison
Elvery Hunt	Fred Carpenter	Ross Brown	Ashley Gloyn

### OFFICIALS (all classes)

Overall Reserve	John Court	Chief Head Steward	Paul Murphy
Runners Assistant	Not Required	Time Keeper	Nancy Allan
Plot Stewards	Willy Willetts		
Judges Briefing	Bruce Redmond	Assistant Alan Wills	
Runner	Steve McDrury – Bill Ward		
Head Stewards 'All Classes'	Norm Styles – Ian Robb – Richard Haffner – Alan Wills - John Thornton		

<b>Ploughing Event Dates 2019</b>		
NQ	Manawatu Vintage	9 <sup>th</sup> & 10 <sup>th</sup> March 2019
Q	Thornbury TMC	5 <sup>th</sup> April
Q	Courtenay/Papaprua	6 <sup>th</sup> April
Q	West Melton	7 <sup>th</sup> April
NQ	Waikato Heavy Horse	22 <sup>nd</sup> April
Q	Tokomairiro	27 <sup>th</sup> April
NQ	Taieri	28 <sup>th</sup> April
Q	East Otago VMC	3 <sup>rd</sup> May
Q	Waitaki	5 <sup>th</sup> May
Q	Timaru	6 <sup>th</sup> May
Q	Central Southland	19 <sup>th</sup> May
Q	Mid Canterbury Vintage	25 <sup>th</sup> May
Q	Hinds	26 <sup>th</sup> May
Q	Marlborough	Queen's Birthday
NQ	Methven	8 <sup>th</sup> June
Q	Lincoln	6 <sup>th</sup> July
Q	Waimea Plains Association	10 <sup>th</sup> August
Q	Waimea Plains VMC	11 <sup>th</sup> August
Q	Reporoa/Rotorua PMA	28 <sup>th</sup> September
Q	Takapau PMA	5 <sup>th</sup> October
Q	Wairarapa PMA	6 <sup>th</sup> October
NQ	Manawatu PMA	7 <sup>th</sup> October
NQ	Edendale	20 <sup>th</sup> October
Q	Middlemarch	27 <sup>th</sup> October
NQ	South Otago	2 <sup>nd</sup> November
Q	Waikato Club	To be Advised
NQ	Franklin Vintage	To be Advised
Q	North Canterbury	To be Advised

## NEW ZEALAND PLOUGHING CHAMPIONSHIPS, RAKAIA 8<sup>th</sup> - 12<sup>th</sup> May 2019

The 2019 New Zealand Ploughing Championships, being hosted by the Rakaia PMA will take place at Wilkinson's farm, near Chertsey between the 8<sup>th</sup> and 12<sup>th</sup> May.

### History

The family are the fifth generation on the property which has been in the family since 1876. The family farm can be traced back to the first Wilkinson who arrived on the sixth ship to land in Canterbury and walked onto tussock country.

The family has photos of the first harvest. Much of the crop grown then was oats for horse feed. When the family arrived the nearest water was at the Rakaia River, six miles down the road. Horse wagons would have to bring water to the farm until the family could put a roof up that would catch rainwater.

Later the Rangitata Diversion Race network supplied stock water. Today sheep and crops are run on the property including barley, feed wheat, milling wheat, peas and malting barley. Kate Wilkinson calculated that they grew enough barley last season to brew 690,000 litres of Heineken beer.

She said the family was happy to support the New Zealand Ploughing Championships and the farm was big enough to fit ploughing paddocks into the crop rotation.

"We have always had the local competition on the farm and to be honest I just love anything that encourages farming and encourages people to find out more about farmers" she said.

### Accommodation

- Available in Rakaia and Ashburton.

### Dinner tickets

- The Rakaia PMA wish to point out there is a finite number of dinner tickets, which will not be available the week of the ploughing. The message is register now to avoid disappointment! That applies to everybody.

### Loading bank

- Access to the loading bank is through the car park and trade sites. Please avoid the yard for health and safety reasons.

### What a line up! – Rakaia Ploughing Match Association 1923



RAKAIA PLOUGHING MATCH ASSOCIATION 1923

Front row: L. Cordner (hon. treasurer), T. Skevington (president), B. McNamara (chairman), A. Holmes (hon. secretary). Back row: T. Bleckley (patron), J. Brown (committee), E. E. Oakley (steward), M. Macale (committee), R. Oakley (patron), C. E. Featherstone (committee), A. J. Magson (patron).

# New Zealand Ploughing Championships 2019 Rakaia

## Programme 64<sup>th</sup> New Zealand Ploughing Championships 8<sup>th</sup> - 12<sup>th</sup> May 2019

- Wednesday 8<sup>th</sup> Practice Day (grass) 9.30am - 4.30pm  
Ice Breaker evening - 5.30pm Gluyas Motor Group  
(Venue to be confirmed)
- Thursday 9<sup>th</sup> Practice day Stubble 9.30am - 4.30pm  
7.30pm NZPA AGM Mid-Canterbury Vintage Machinery Club Rooms
- Friday 10<sup>th</sup> 9.30am Church Service  
10.15am Plot Draw  
11.00am Ploughman's Briefing  
11.30am Mayoral Luncheon  
1.00pm Bus Trip
- Saturday 11<sup>th</sup> 9.30am Judges Briefing  
10.00am Official Opening in the marshalling yard  
10.30am - Parade to plots  
11.20am - Start of ploughing  
11.40am- Stop for judging of splits  
12.20pm- Ploughing recommences  
3.00pm -Ploughing stops  
3.15pm -Parade to marshalling yard
- Sunday 12<sup>th</sup> 10.30am -Parade to plots  
11.20am -Start of ploughing  
11.40am-Stop for judging splits  
12.20pm -Ploughing recommences  
3.00pm -Ploughing stops  
3.15pm - Parade to marshalling yard
- Presentation Dinner - Hotel Ashburton  
5.30pm Drinks  
6.30pm Presentations  
7.30pm Dinner

Next NZPA Executive Meeting  
7<sup>th</sup> May 2019  
in Ashburton

Deadline for articles for March  
newsletter is  
28<sup>th</sup> February 2019



## Registration Form

64<sup>th</sup> New Zealand Ploughing Championships

Held at Wilkinson's Farm, Wilkinsons Road, Chertsey

8<sup>th</sup> – 12<sup>th</sup> May 2019

Name: \_\_\_\_\_ Spouse/Partner: \_\_\_\_\_

Phone \_\_\_\_\_ Cell: \_\_\_\_\_ Email: \_\_\_\_\_

Please indicate: (circle) Competitor Judge Executive Steward Supporter

Icebreaker Evening (Wednesday 8<sup>th</sup>) Venue to be advised  
Sponsor - Gluyas Motor Group Number attending \_\_\_\_\_ (no charge)

Mayoral Welcome (Friday 10<sup>th</sup>) To be held at  
Sinclair Community Centre, Park Street.  
Ashburton. Number attending \_\_\_\_\_ (no charge)

½ Day Bus Trip (Friday 10<sup>th</sup>) \$30 pp Number attending \_\_\_\_\_ Total \$ \_\_\_\_\_  
Includes afternoon tea  
Leaving from Hotel Ashburton.

Presentation Dinner (Sunday 12<sup>th</sup>)  
Hotel Ashburton. Who is attending \_\_\_\_\_  
\_\_\_\_\_

\$55 pp,  
Children 0 – 5, No charge,  
Children over 5 - \$10  
Number attending \_\_\_\_\_ Total \$ \_\_\_\_\_

Registrations to be received by 12 April 2019 Total to Pay \$ \_\_\_\_\_

Registrations and payment forwarded to: Graeme Joyce  
Address: 794 East Maddisons Road, Rolleston 7614  
Email: thejoyces@xtra.co.nz  
Phone: 03 347 0791

Cheques made payable to Rakaia Ploughing Match Association 2019  
Direct Credit to bank account 02 0836 0161437 001 (please use your name as a reference)

**All tickets will be in your registration pack to be collected at the Ice  
Breaker Evening**